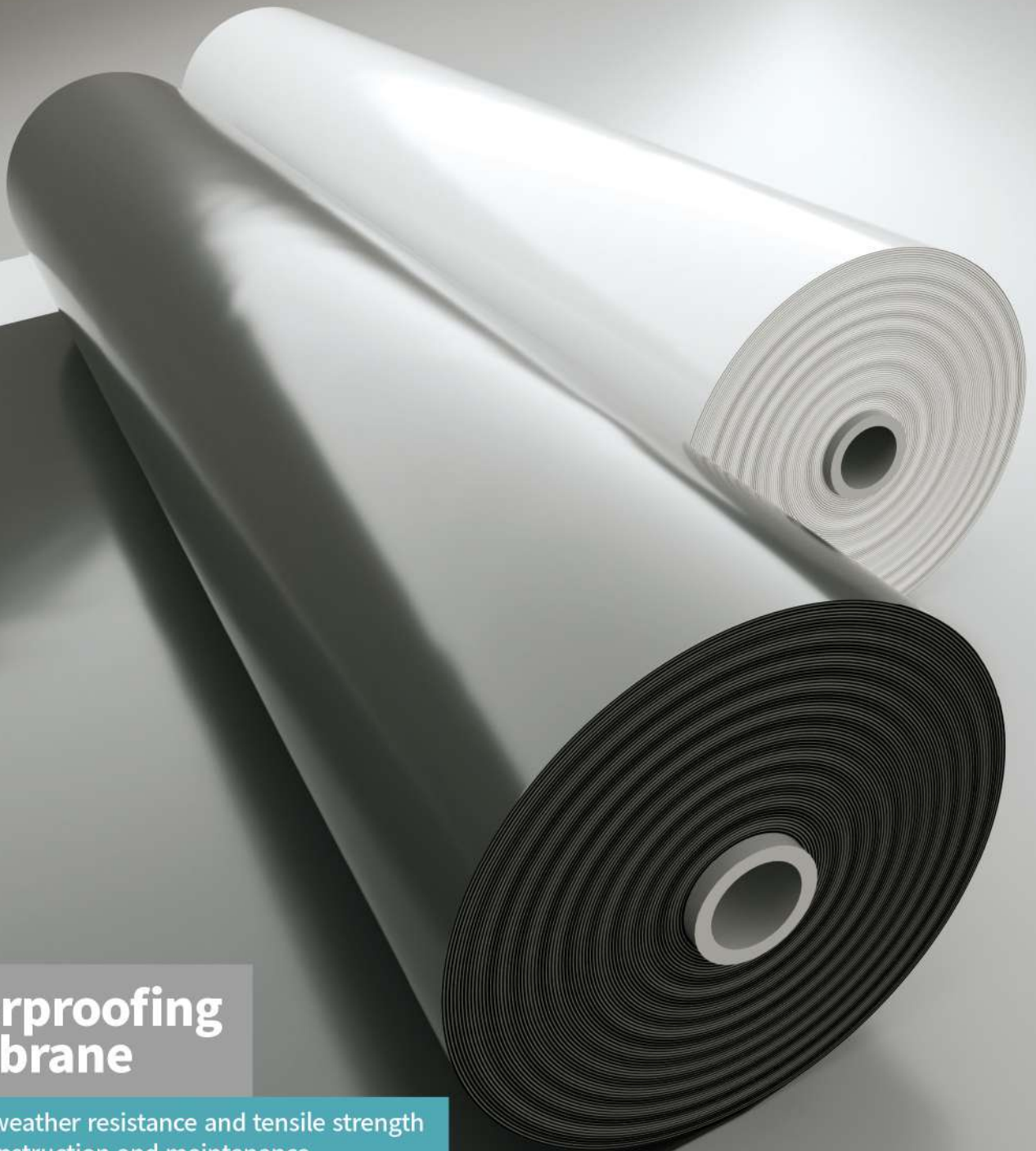


Waterproofing Membrane

Since its establishment in 1987, we have served customers around the world for 30 years. We have an experienced R&D technical team and a highly productive management department. We continue to innovate products, optimize manufacturing processes and quality control as our purpose to make our products meet customer requirements. In addition, it can be closer to everyone's living environment and bring consumers a convenient and comfortable environment. Environmental protection and sustainable development are the primary direction of an enterprise.

Upholding the goal of being environmentally friendly, all management operations are directed towards the goals of preventing pollution, reducing waste, and saving resources. Since its establishment, it has continued to develop and innovate, trying to meet the real needs of customers with better services, more advanced manufacturing processes, better quality, and more environmentally friendly materials in the industry.



Waterproofing Membrane

Excellent weather resistance and tensile strength
Easy to construction and maintenance
TPO/OBC/PVC/PE

Specifications

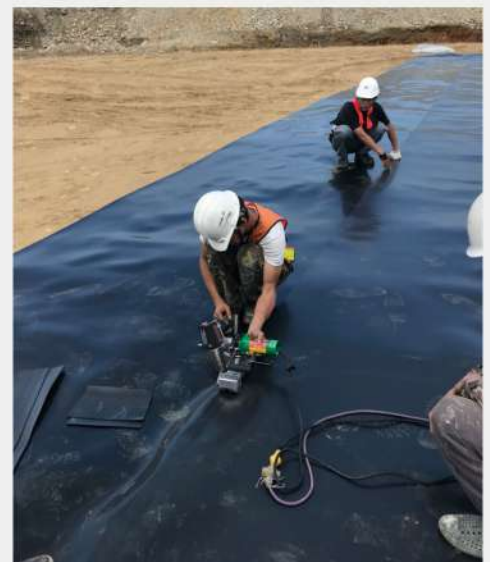
PVC Waterproofing Membrane

PVC Waterproofing membrane is a modern roofing and insulating solution. Made of polyvinyl chloride (PVC), it is known for its unique combination of strength and flexibility, high resistance to tensile load, UV radiation, precipitation and other forms of material stress.

| Thickness | Width | Spec. | Length | Remarks |
|----------------|-------|---------------------------|----------------|-----------------------|
| 1.0/1.5/2.0 mm | 2.0 m | Single layer | 15-25 m / roll | Black / Grey |
| 1.5m/2.0 mm | 2.0 m | Double layer | 15-25 m / roll | Black / Grey |
| 1.5m/2.0 mm | 2.0 m | Double layer and PET mesh | 15-25 m / roll | PET Mesh / glassfiber |

APPLICATION

- Roofing of commercial and industrial buildings
- Artificial ponds
- Swimming pools
- Water storage systems
- Underground structure, tunnel constructions
- Biogas bag



TPO Waterproofing Membrane

TPO (thermoplastic olefin) is a combination of polypropylene based plastic and ethylenepropylene rubber, that are polymerized together. TPO membranes reflect UV radiation and therefore keep the surface of the roof cool during summer months.

| Thickness | Width | Spec. | Length | Remarks |
|------------|------------|---------------------------|----------------|-----------------------|
| 1.5/2.0 mm | 2 m | Single layer | 20-30 m / roll | Black / Grey |
| 2.0 mm | 1.5 m / 2m | Double layer | 20-30 m / roll | Black / Grey |
| 2.0 mm | 1.5 m / 2m | Double layer and PET mesh | 20-30 m / roll | PET Mesh / glassfiber |

APPLICATION

Roof of commercial, industrial and residential buildings
Ornamental usage: Air garden, Artificial ponds
Water storage system
Reservoir construction: Pisciculture ponds, Rainwater collection systems



PE Waterproofing Membrane

Polyethylene (PE) is a thermoplastic polymer produced by the polymerization of ethylene. The material has excellent anti-seepage, anticorrosion properties, chemical stability, good processability. It has been widely used in water conservancy projects, pipelines, reservoirs, sewage tanks, garbage dumps etc.

| Thickness | Width | Spec. | Length | Remarks |
|--------------|-------|--------------|----------------|---------|
| 1.0 mm | 2.0 m | Single layer | 20-30 m / roll | Black |
| 1.5 / 2.0 mm | 2.0 m | Single layer | 20-30 m / roll | Black |

APPLICATION

- Watertanks, reservoirs
- Underground constructions
- Landfill liner
- Root protection barrier on roofs
- Agricultural membranes



OBC Waterproofing Membrane

Olefin Block Copolymers (OBC) are olefinic thermoplastic elastomers consisting of alternating hard (highly rigid) and soft (elastomeric) segments. OBC is used for its high temperature tolerance while maintaining its flexible

| Thickness | Width | Length | Surface | Remarks |
|--------------|-------|----------------|---------|---------------|
| 1.0 / 1.5 mm | 2.0 m | 20-30 m / roll | Smooth | Black / White |

APPLICATION

Artificial ponds
Water storage system,
water tank reservoirs
Roofing & Waterproofing
Underground constructions



FEATURES / STANDARD

PVC WATERPROOFING MEMBRANE

| Item | | Unit | Standard | Testing method |
|---|---|-------------------|----------------|---|
| Stretch ability | Tensile strength (longitudinal) | N/cm ² | 1000 and above | CNS 10145(2016) (Homogeneous flakes) |
| | Tensile strength (lateral) | N/cm ² | 1000 and above | |
| | Elongation (longitudinal) | % | 200 and above | |
| | Elongation (lateral) | % | 200 and above | |
| Tearing | Right-angle tear strength(longitudinal) | N/cm | 400 and above | |
| | Right-angle tear strength(lateral) | N/cm | 400 and above | |
| Description: 1. Test environment : temperature 20 ± 2°C , humidity 65 ± 20%RH ◦ | | | | |

TPO WATERPROOFING MEMBRANE

| Item | | Unit | Standard | Testing method |
|---|---|-------------------|---------------|---|
| Stretch ability | Tensile strength (longitudinal) | N/cm ² | 750 and above | CNS 10145(2016) (Homogeneous flakes) |
| | Tensile strength (lateral) | N/cm ² | 750 and above | |
| | Elongation (longitudinal) | % | 450 and above | |
| | Elongation (lateral) | % | 450 and above | |
| Tearing | Right-angle tear strength(longitudinal) | N/cm | 400 and above | |
| | Right-angle tear strength(lateral) | N/cm | 400 and above | |
| Description: 1. Test environment : temperature 20 ± 2°C , humidity 65 ± 20%RH ◦ | | | | |

PVC WATERPROOFING MEMBRANE (DIN)

| Item | Standard | Testing method |
|--------------------------------------|--|----------------|
| Thickness | 2.0mm | DIN 53370 |
| Tensile strength | 15 N/mm ² min | DIN 53455 |
| Elongation at break | 250 % min | DIN 53455 |
| compressive strength (20% strain) | 2.5 N/mm ² min (Fold a 10 mm cube sample with side length) | DIN 53454 |
| Crack resistance | 100 N/mm min | DIN 53363 |
| Water resistance | Good 10 bar/10 hours | DIN 16726 |
| Joint tensile strength | 13.5 N/mm ² min | DIN 16726 |
| Heat resistance | ±2% max | DIN 16726 |
| Water absorption | 1% max | DIN 53495 |
| Acid and alkali resistance (28 days) | Tensile strength loss : ±20% max | DIN 16726 |
| | Elongation at break : ±20% max | |
| Fire resistance | Non-flammable | DIN 4102/1 |

TPO WITH MESH WATERPROOFING MEMBRANE

| Item | | Unit | Standard | Testing method |
|---|---------------------------------|------|---------------|---|
| Stretch ability | Tensile strength (longitudinal) | N/cm | 240 and above | CNS 10145(2016) (Reinforced compound type) |
| | Tensile strength (lateral) | N/cm | 240 and above | |
| | Elongation (longitudinal) | % | 15 and above | |
| | Elongation (lateral) | % | 15 and above | |
| Description: 1. Test environment : temperature 20 ± 2°C , humidity 65 ± 20%RH ◦ | | | | |

OBC WATERPROOFING MEMBRANE

| Item | | Unit | Standard | Testing method |
|---|---|-------------------|---------------|--|
| Stretch ability | Tensile strength (longitudinal) | N/cm ² | 750 and above | CNS 10145(2016) (Homogeneous flakes, thermoplastic elastomer system) |
| | Tensile strength (lateral) | N/cm ² | 750 and above | |
| | Elongation (longitudinal) | % | 450 and above | |
| | Elongation (lateral) | % | 450 and above | |
| Tearing | Right-angle tear strength(longitudinal) | N/cm | 400 and above | |
| | Right-angle tear strength(lateral) | N/cm | 400 and above | |
| Description: 1. Test environment : temperature 20 ± 2°C , humidity 65 ± 20%RH ◦ | | | | |

PVC WITH MESH WATERPROOFING MEMBRANE

| Item | | Unit | Standard | Testing method |
|---|---|------|---------------|---|
| Stretch ability | Tensile strength (longitudinal) | N/cm | 240 and above | CNS 10145(2016) (Reinforced compound type) |
| | Tensile strength (lateral) | N/cm | 240 and above | |
| | Elongation (longitudinal) | % | 15 and above | |
| | Elongation (lateral) | % | 15 and above | |
| Tearing | Right-angle tear strength(longitudinal) | N | 50 and above | |
| | Right-angle tear strength(lateral) | N | 50 and above | |
| Description: 1. Test environment : temperature 20 ± 2°C , humidity 65 ± 20%RH ◦ | | | | |



Singform Enterprise Co., Ltd.



No. 21, Machouhouyuanqu 2nd Rd.,
Lucao Township, Chiayi County
611001, Taiwan (R.O.C.)

TEL : +886-5-379-7622

FAX : +886-5-370-0405

MAIL : singform@sf68.com.tw