



**SINGFORM ENTERPRISE CO., LTD**

新豐企業股份有限公司  
152-300, Ta-Ker Lee, Putze City,  
Chia-Yi Hsien 613, Taiwan, R.O.C.  
TEL +886-5-3797-622  
FAX +886-5-3700-405  
[www.sfc.com.tw](http://www.sfc.com.tw)  
[singform@sf68.com.tw](mailto:singform@sf68.com.tw)

**SUZHOU XINFENG COMPOSITE FIBER PRODUCTS CO., LTD**

蘇州新豐複合纖維制品有限公司  
No. 11 Fada Road, Development Area, Taicang City,  
Suzhou City, Jiangsu 215413, China  
TEL +86-512-5344-1030  
FAX +86-512-5344-1007

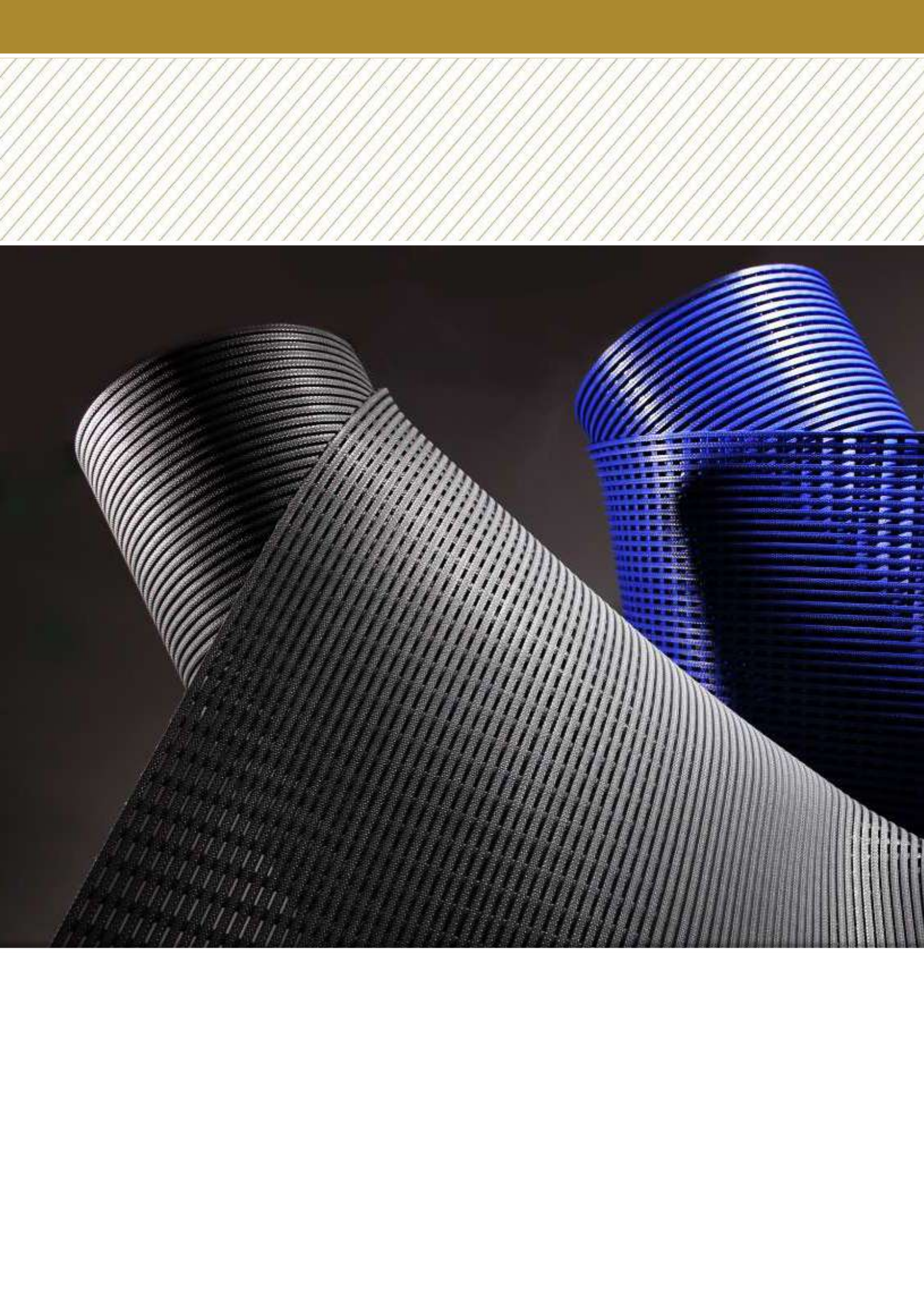
**JIANGSU SFSD COMPOSITE MATERIAL PRODUCTS CO., LTD**

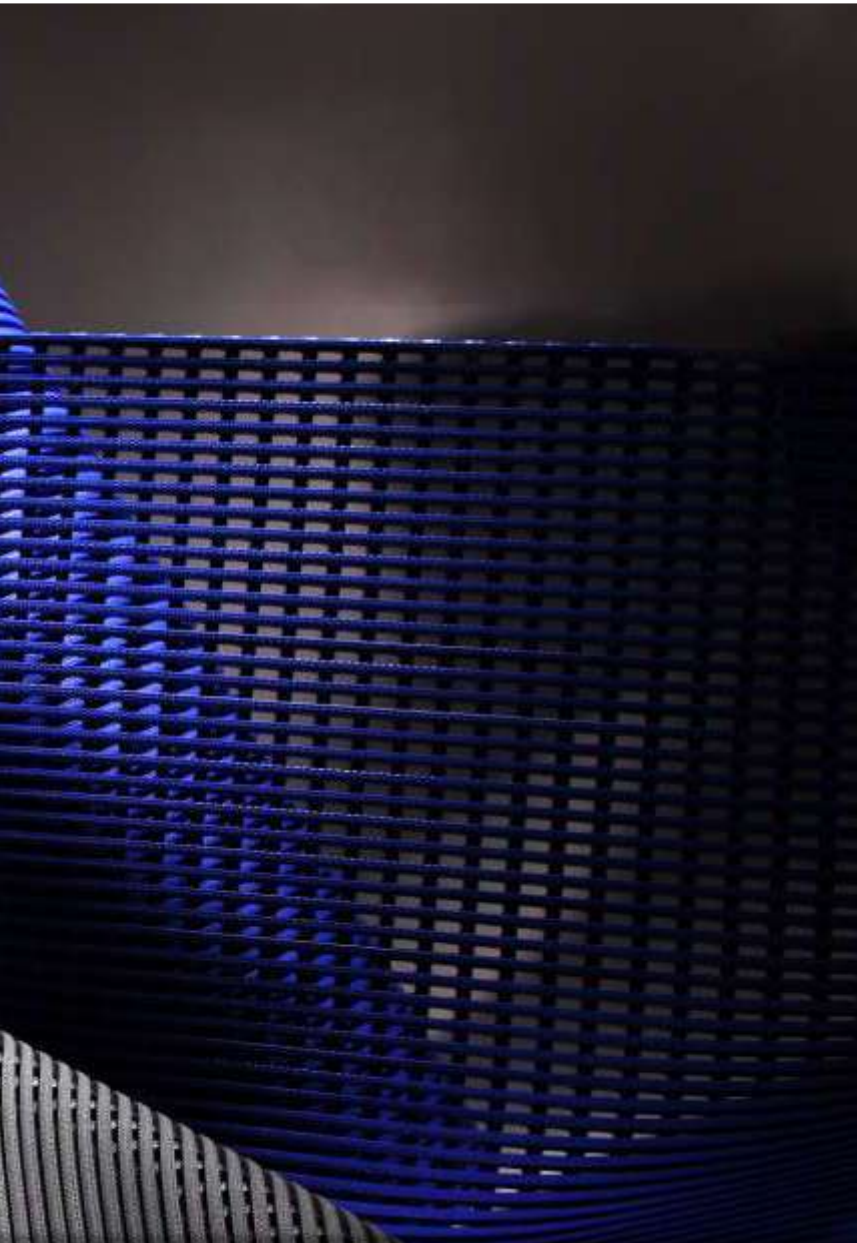
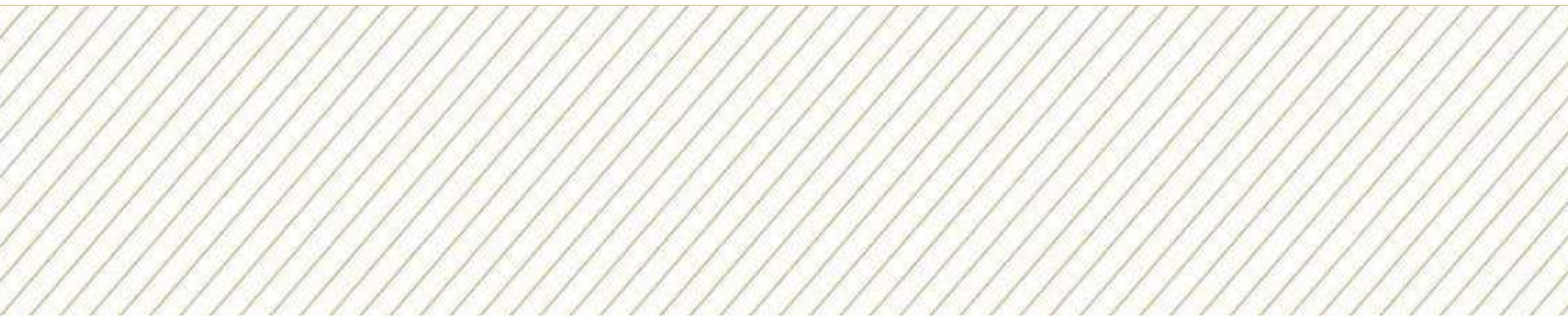
江蘇新豐申達複合材料制品有限公司  
No. 699 Century Avenue, Yancheng City, Jiangsu, China  
TEL +86-515-8108-2366  
FAX +86-515-8108-2866

**SF** CHEN BROTHERS



**QUALITY MATS  
FOR A BETTER WORLD**





## TABLE OF CONTENT

ABOUT SINGFORM	3/4
ANCHOR MAT	5/6
ANTI SLIP SAFETY MAT	7/8
CROSS MAT	9/10
ZIG ZAG MAT	11/12
MULTI-PURPOSE MAT	13/14
STRIPE MAT	15/16
SHARKY MAT	17/18
DIAMOND MAT	19/20
CLEANMAX MAT	21/22
WELCOME MAT	23/24
PATCH & LOGO MAT	25/26
MATRICKS MAT	27/28
ROCKY MAT	29/30
STARRY MAT	31/32
TOTEM MAT	33/34
PRINTED MAT	35/36
TWIN COLOR MAT	37/38
MONOFILAMENT YARN	39
WATERPROOFING MEMBRANE	40

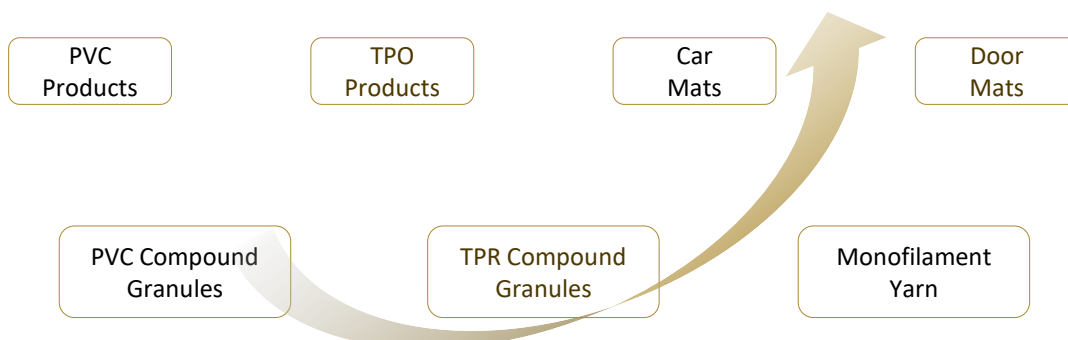


## ABOUT SINGFORM

Founded in 1987 by Johnson Chen and Jessie Chen, **Singform Enterprise Co., Ltd.** has become one of the largest mat manufacturers in Taiwan. Today Singform's three major products are Door Mats, Car Mats and Waterproofing Membranes. With vertical integration, Singform's internal manufacturing capabilities are strong and unparalleled.

Headquartered in Chia-Yi, Taiwan, Singform has manufacturing facilities and sales offices both in Taiwan and China. Singform's Chinese factory – Suzhou Xinfeng – was established in 2000; its core activity is manufacturing of Car Mats and Rubber Backing Door Mats. A brand new factory in YanCheng, China was built in 2013, and it reinforced Singform's product lines.

Our product portfolio, materials and services meet the market demand around the globe. We offer a wide range of matting solutions for residential, commercial, and industrial applications. All our products are created to provide the perfect combination of quality, performance, and design. We do our best to fulfill our customer expectations.





Since 1987 we are a reliable mat supplier. Today we apply the latest materials and advanced technologies to design quality mats for a better world.

Singform is dedicated to create a simple and highly performing flooring solution for you. That is the concept in which this company was started. What's more, it is the concept that will always be pursued by Singform.

At Singform we pay significant attention to quality management. We are ISO 1401, TS 16949 and Q1 certified. Our strong commitment to innovation and quality is manifested in Singform's constant re-investment in new equipment and proprietary process. We combine our know-how with the best. We are committed to minimize environmental impacts and also offer products made from recycled materials.

## QUALITY MANAGEMENT SYSTEM



*Let's begin our journey of mats with Singform!*

# ANCHOR MAT



**Anchor Mat** is the first step toward safer commercial buildings. Adding gap pads makes this product even more flexible when applying to recessed well entrances. Inserted carpets can effectively remove dirt and absorb moisture. This will be your ultimate entrance matting solution.

### Main Benefits

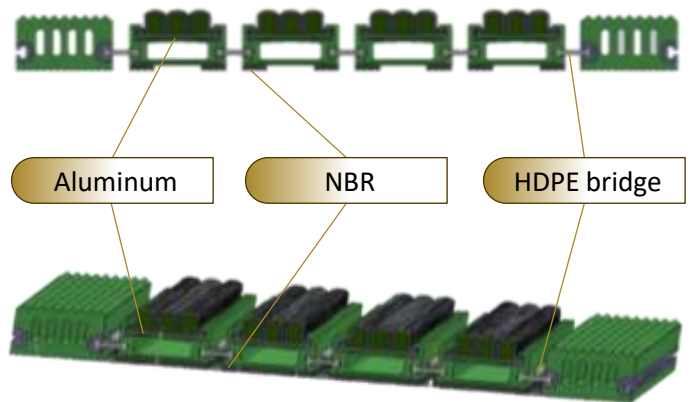
- Replaceable carpets for different design needs
- Applicable for high traffic and busy areas
- Effective moisture and dirt removal
- Fluid drainage and slip resistance
- Easy to assemble

### Application

- ▶ Commercial buildings
- ▶ High traffic areas
- ▶ Indoor/outdoor areas

### Product Specification

<b>Material</b>	PVC with aluminum insert
<b>Weight</b>	310 ± 15 g/m <sup>2</sup>
<b>Thickness</b>	18 mm
<b>Thickness with Carpet</b>	21 ± 1.0 mm
<b>Per Bar (cm)</b>	1.8x3x350



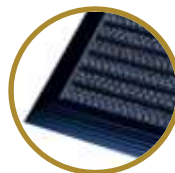
# Customize Your ANCHOR MAT



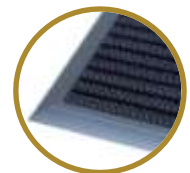
Put your own logo in the Anchor Mat



Without the edge



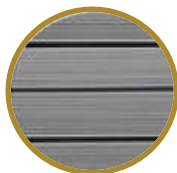
With black edge



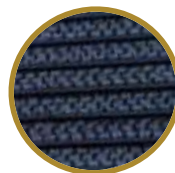
With grey edge



Black PVC scraper



Grey PVC scraper



Carpet stripes



PVC scraper & carpet stripes





# ANTI SLIP SAFETY MAT

**Anti Slip Safety Mat** is aimed at preventing slip and fall accidents in the workplace. Combination of mineral coated surface and PVC-backing provides a high performance anti-slip surface in almost any work area. It is also characterized by an effective grease, oil and water resistance.



Mineral Coating

## Main Benefits

- Highest slip resistance standards
- Grease, oil and water resistant
- Perfect for industrial environments and kitchens
- Easy to install and clean
- Fits all kinds of surfaces

## Product Specification

<b>Surface Material</b>	Mineral Coating
<b>Backing</b>	PVC
<b>Weight</b>	2.6 ± 0,15 kg/m <sup>2</sup>
<b>Thickness</b>	2.25 ± 0.2 mm
<b>Rolls (cm)</b>	90x600; 90x1200





**Application**

- ▶ Industrial environments
- ▶ Food processing & food service areas
- ▶ Extremely slippery areas

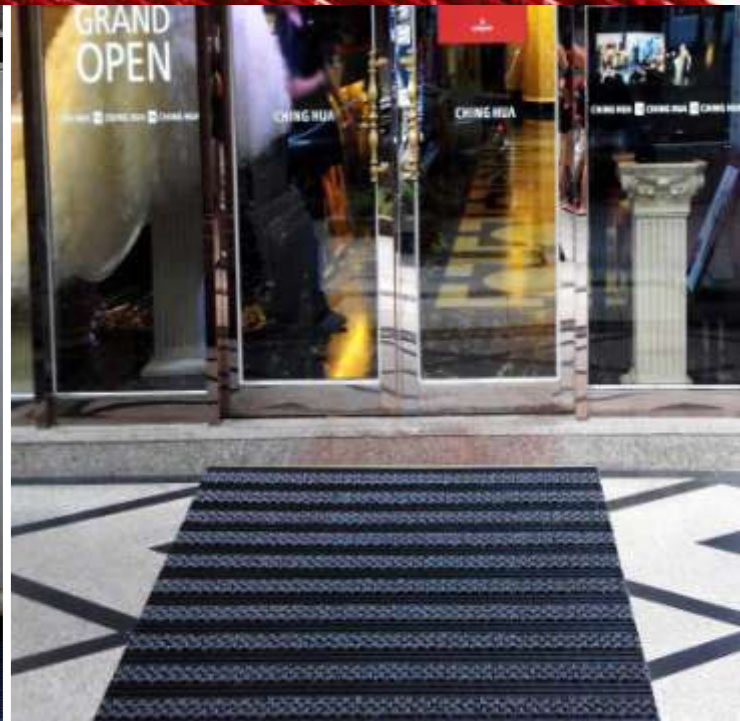


# CROSS MAT

Our highly durable **Cross Mat** protects your floor from damage and keeps your surroundings intact. With excellent drainage capability it gives you superior hygienic benefits.

## Main Benefits

- Highest slip resistance standards
- Grease, oil and water resistant
- Perfect for industrial environments
- Easy to install and clean
- Fits all kinds of surfaces



## Application

- ▶ Industrial environment
- ▶ Commercial buildings
- ▶ Wet areas

## Product Specification

Wide Spaced Type (RG)		Narrow Spaced Type (RG)		Wide Spaced Type (HD)	
<b>Material</b>	PVC	<b>Material</b>	PVC	<b>Material</b>	Recycled PVC
<b>Weight</b>	6.8 ± 0.4 kg/m <sup>2</sup>	<b>Weight</b>	8.1 ± 0.5 kg/m <sup>2</sup>	<b>Weight</b>	6.8 ± 0.4 kg/m <sup>2</sup>
<b>Thickness</b>	12 ± 1.0 mm	<b>Thickness</b>	12 ± 1.0 mm	<b>Thickness</b>	13.5 ± 1.0 mm

### Rolls (cm):

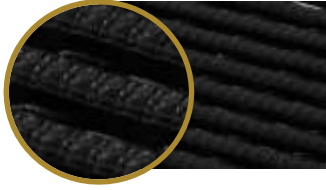
- 60x600;
- 60x1000;
- 90x600;
- 90x1000;
- 120x600;
- 120x1000



# Customize Your CROSS MAT

## Surface Pattern

HD

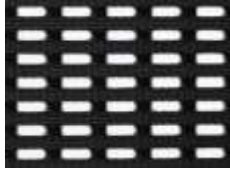


RG



Pitch

Wide



Narrow

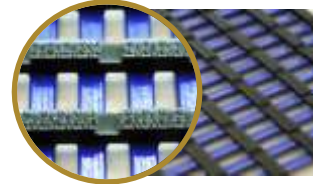


Drainage Way

Two-way



Four-way



Inserts

Without carpet insert

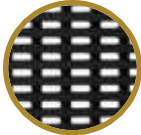


With carpet insert

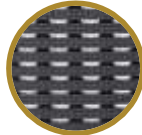


Color

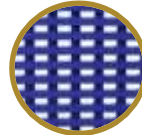
Black



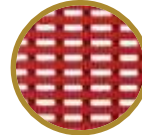
Grey



Blue



Red



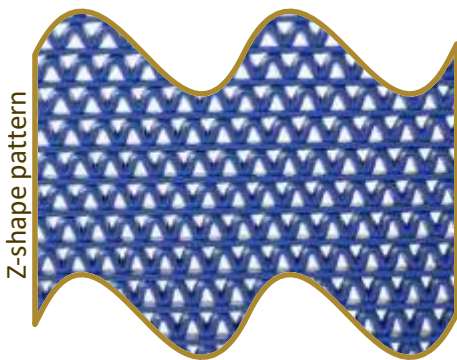
# ZIG ZAG MAT



**Zig Zag Mat** is perfect for wet areas. It provides a hygienic, safe and attractive surface with anti-fungal and anti-bacterial features. Very light and can be easily cut to fit any place.

### Main Benefits

- Barefoot comfort and safety
- Anti-bacterial and anti-fungal
- Formulated Z-shape pattern provides outstanding slip resistance and liquid drainage
- Effective indoors and outdoors
- Light weight construction



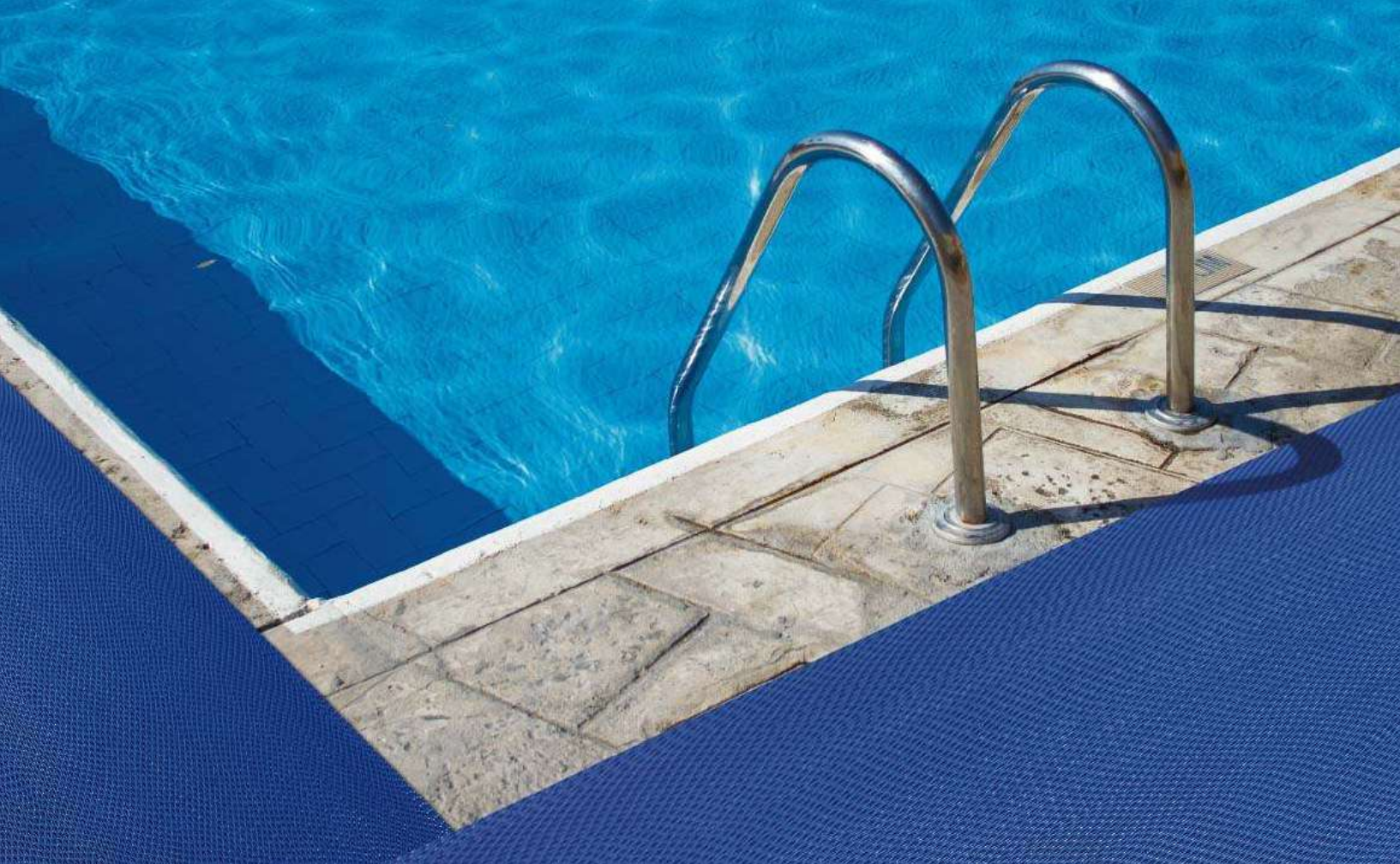
### Product Specification

<b>Material</b>	PVC
<b>Weight</b>	3.485 ± 0.165 kg/m <sup>2</sup>
<b>Thickness</b>	5.5 ± 0.5 mm
<b>Mats (cm)</b>	45x60; 45x75; 60x90; 90x150; 120x180
<b>Rolls (cm)</b>	90x600; 90x1200; 120x600; 120x1200

<b>Material</b>	PVC
<b>Weight</b>	5 ± 0.2 kg/m <sup>2</sup>
<b>Thickness</b>	8.5 ± 0.5 mm
<b>Mats (cm)</b>	45x60; 45x75; 60x90; 90x150; 120x180
<b>Rolls (cm)</b>	90x1200

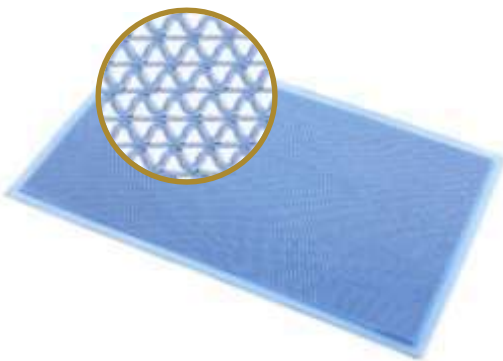
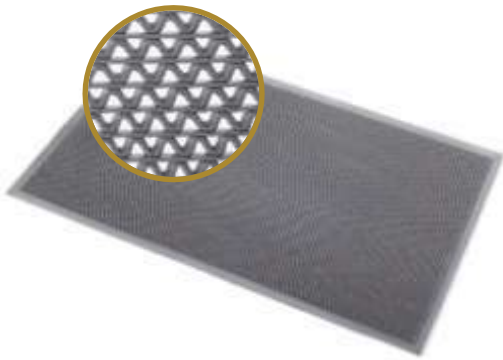
<b>Material</b>	PVC
<b>Weight</b>	8.5 ± 0.5 kg/m <sup>2</sup>
<b>Thickness</b>	11.5 ± 0.5 mm
<b>Mats (cm)</b>	90x150; 120x180
<b>Rolls (cm)</b>	90x1200; 120x1200





**Application**

- ▶ Commercial buildings
- ▶ Home uses
- ▶ Indoor/outdoor areas



# MULTI-PURPOSE MAT

**Multi-Purpose Mat** is perfect for the industrial areas. It consists of two-piece matting system – disposable carpet and slip-resistant base. The surface can absorb any petroleum-based liquid and can be easily changed for a new one!



## Main Benefits

- Interchangeable top carpet for various applications
- Effectively absorbs petroleum-based liquids
- Easy to install and clean
- Fits all kinds of surfaces

## Application

Industrial environment / Commercial buildings /  
Food processing areas

## Product Specification

Surface Material	Depends on a carpet use
Backing	PVC
Weight	4.1 ± 0.33 kg/m <sup>2</sup>
Thickness	9.3 ± 0.7 mm
Rolls (cm)	90X150







# STRIPE MAT



### Main Benefits

- Effective debris, dirt and mud removal
- Elegant design perfect for commercial uses
- Dries quickly
- Applicable for high traffic and busy areas
- Easy to clean

### Product Specification

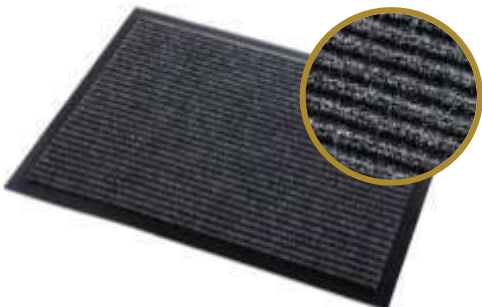
<b>Pile Material</b>	PP + PET
<b>Backing</b>	PVC
<b>Weight</b>	3.6 ± 0.5 kg/m <sup>2</sup> (Mats); 3.45 ± 0.17 kg/m <sup>2</sup> (Rolls)
<b>Thickness</b>	9.0 ± 1.0 mm
<b>Mats (cm)</b>	45x60; 45x75; 60x90; 90x120; 90x150; 120x180
<b>Rolls (cm)</b>	90x1200; 90x1800; 120x1200; 120x1800; 180x1800



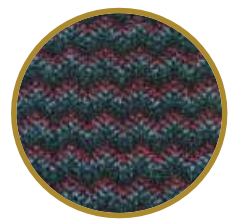
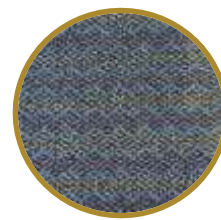
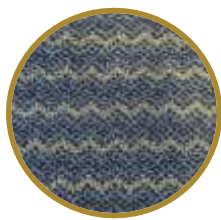
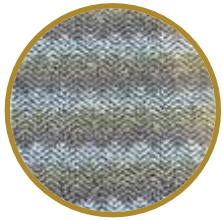
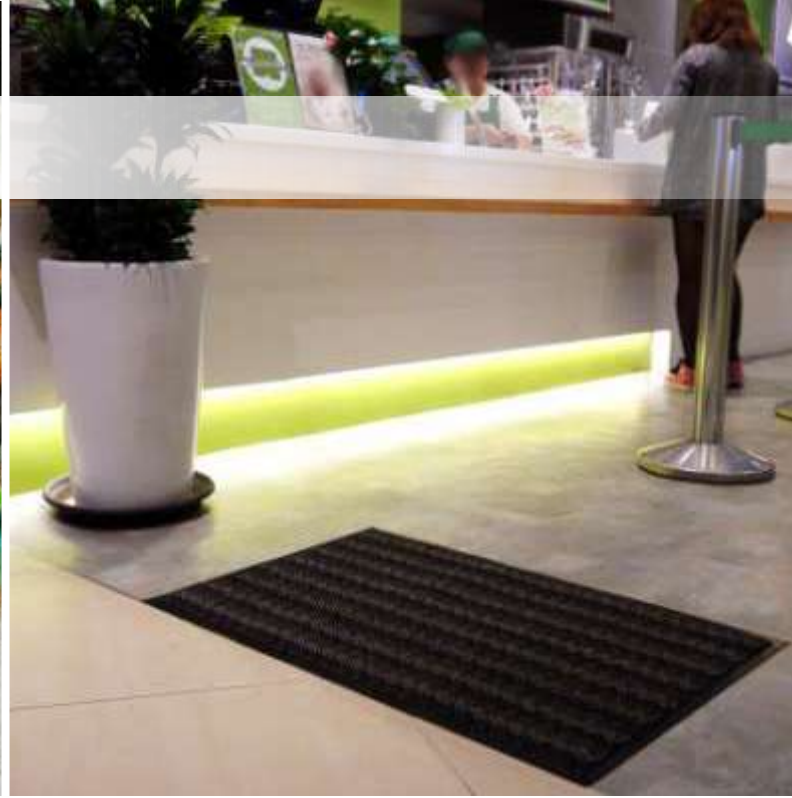


### Application

- ▶ Commercial buildings
- ▶ Home uses
- ▶ Indoor/outdoor areas
- ▶ High traffic areas



# SHARKY MAT

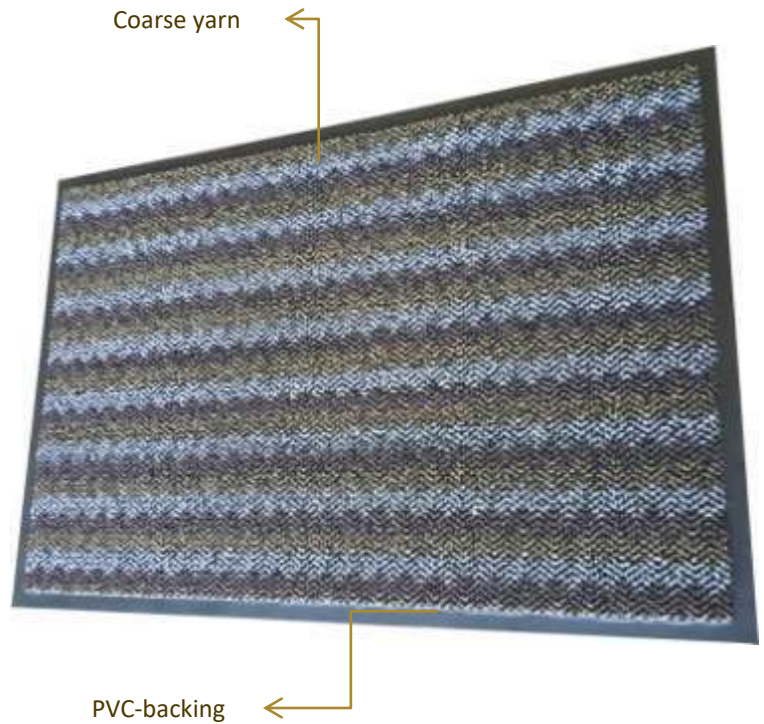


## Main Benefits

- Highest dirt removing standards
- Highly durable
- Highest slip resistance standards

## Product Specification

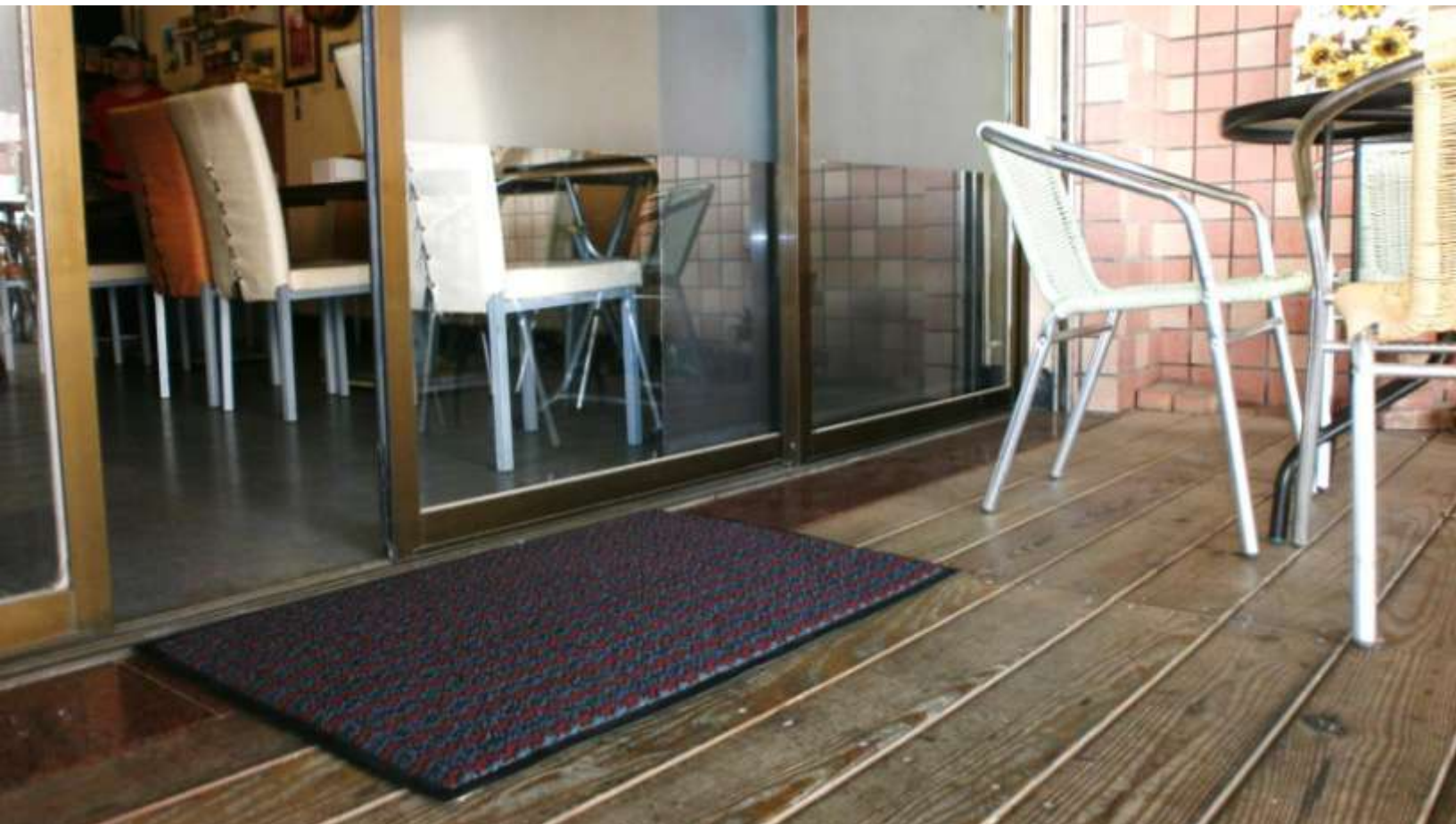
<b>Pile Material</b>	PP
<b>Backing</b>	PVC
<b>Weight</b>	3.68 ± 0.4 kg/m <sup>2</sup>
<b>Thickness</b>	7.0 ± 0.5 mm
<b>Mats (cm)</b>	45x60; 45x75; 60x90; 90x120; 90x150; 120x180
<b>Rolls (cm)</b>	90x1200; 90x1800; 120x1200; 120x1800; 180x1800





#### Application

- ▶ Commercial buildings
- ▶ Home uses
- ▶ Outdoor areas



# DIAMOND MAT



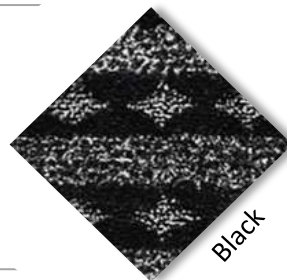
## Main Benefits

- Highly absorbent
- Elegant design
- Easy dirt and mud removal



## Product Specification

<b>Pile Material</b>	Nylon + PP
<b>Backing</b>	PVC
<b>Weight</b>	931 g/m <sup>2</sup>
<b>Thickness</b>	4.0 ± 0.1 mm
<b>Mats (cm)</b>	45x60; 45x75; 60x90; 90x120; 90x150; 120x180
<b>Rolls (cm)</b>	90x1200; 90x1800; 120x1200; 120x1800; 180x1800



Black



Red



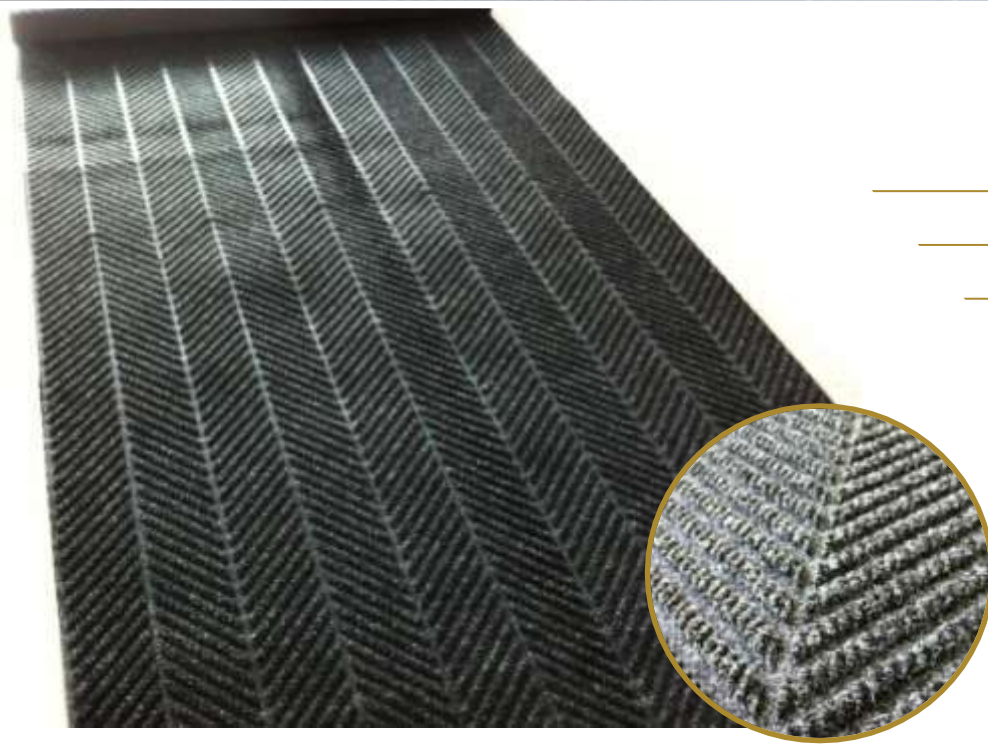


**Application**

- ▶ Commercial buildings
- ▶ Home uses
- ▶ Outdoor areas



# CLEANMAX MAT



## Product Specification

<b>Pile Materia</b>	PP + PET
<b>Backing</b>	Rubber
<b>Weight</b>	3.8 ± 0.15 kg/m <sup>2</sup>
<b>Thickness</b>	10.5 ± 0.5 mm
<b>Rolls (cm)</b>	180x1800



## Main Benefits

- Removes dirt and absorbs water;
- Washable (for rubber backing)
- Easy to clean
- Excellent resilience and long lasting wear





**Application**

- ▶ Indoors/Outdoors
- ▶ Commercial buildings





# WELCOME MAT



## Product Specification

<b>Pile Material</b>	Nylon
<b>Backing</b>	Rubber or PVC
<b>Weight</b>	2.55 ± 1.25 kg/m <sup>2</sup>
<b>Thickness</b>	10.5 ± 0.5 mm
<b>Mats (cm)</b>	45x75; 60x90; 75x90; 90x150; 120x180

## Main Benefits

- Welcomes customers from the entrance
- Keeps dirt and water outside
- Machine washable
- Easy to clean
- Excellent resilience and long lasting wear





**Application**

- ▶ Commercial buildings
- ▶ Home uses
- ▶ Indoor/outdoor areas



# PATCH & LOGO MAT



## Application

- ▶ Commercial buildings
- ▶ Home uses
- ▶ Indoor/outdoor areas.



## Product Specification

<b>Pile Material</b>	Nylon
<b>Backing</b>	Rubber
<b>Weight</b>	2.55 ± 1.25 kg/m <sup>2</sup>
<b>Thickness</b>	10.5 ± 0.5 mm
<b>Mats (cm)</b>	Available in any size (max width: 180, Length: no limit)

## Main Benefits

- Customizable for matching different designs
- Durable rubber backing
- Soft underfoot and elegant
- Designed for entrance
- Perfect for branding

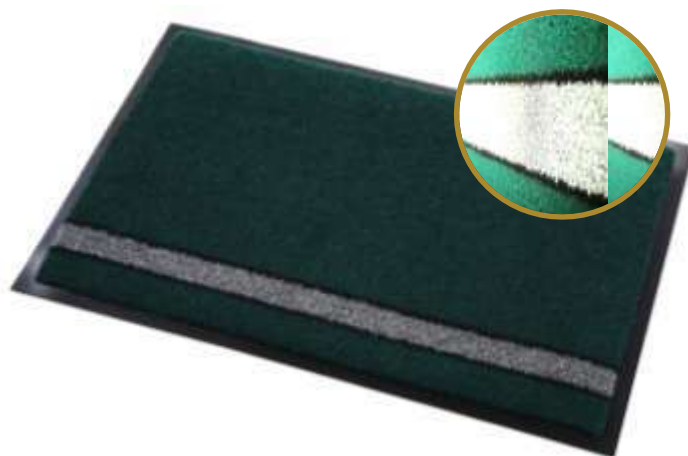
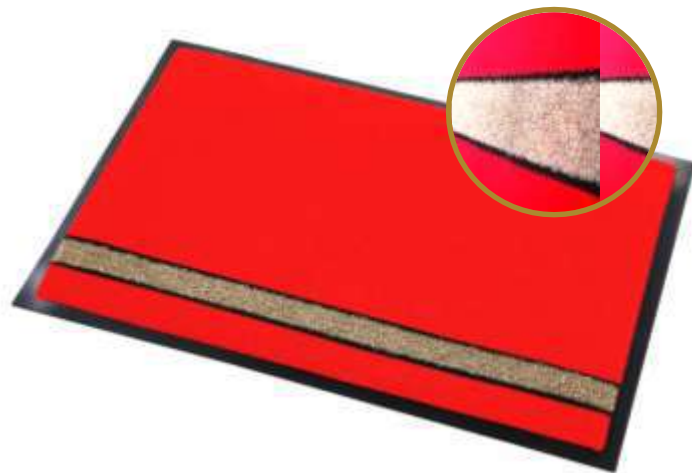




### Colors Available



# MATRICKS MAT



## Main Benefits

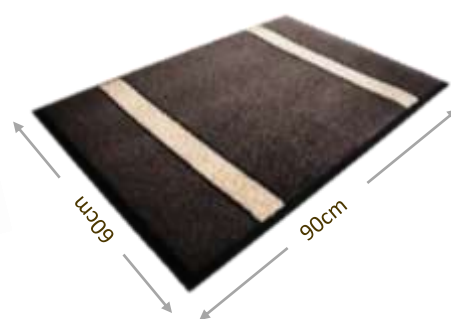
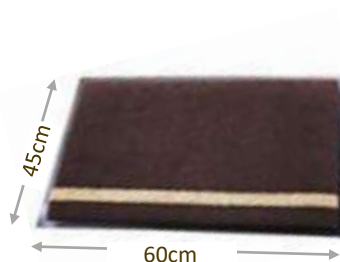
- Highest slip resistance standards
- Grease, oil and water resistant
- Easy to install and clean
- Fits all kinds of surfaces

## Application

- ▶ Home uses
  - Entryways
  - Kitchens
  - Garages, etc.
- ▶ Indoor/outdoor areas

## Product Specification

<b>Pile Material</b>	PP
<b>Backing</b>	PVC
<b>Weight</b>	2.1 ± 0.15 kg/m <sup>2</sup>
<b>Thickness</b>	7.0 ± 1.0 mm
<b>Mats (cm)</b>	45x60; 60x90
<b>Colors</b>	Red; Green; Grey; Brown





# ROCKY MAT



## Main Benefits

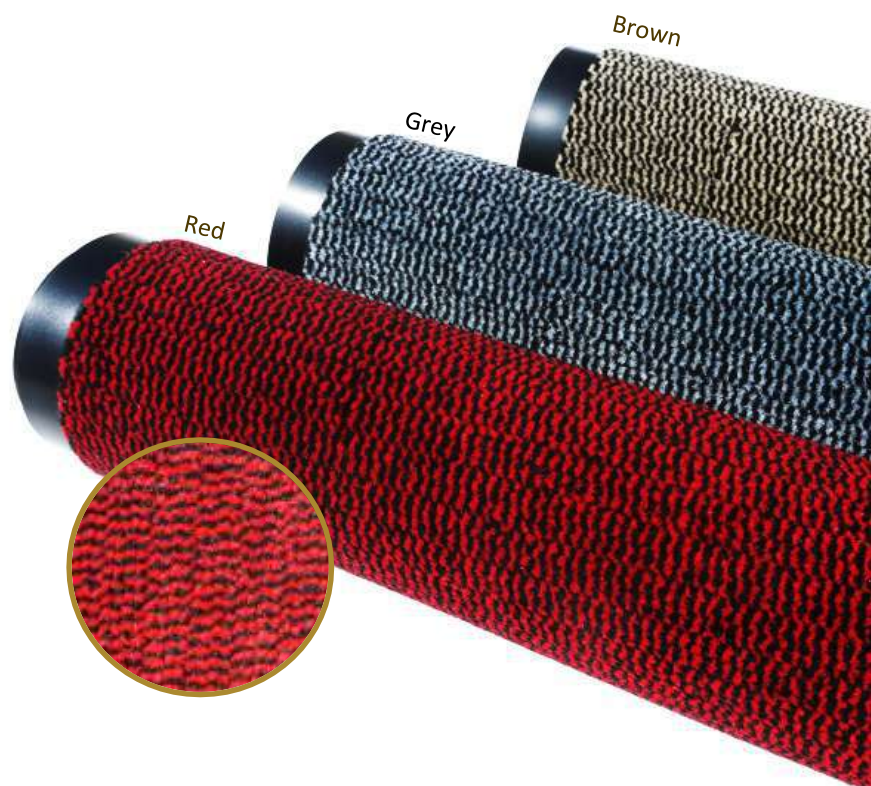
- Mildew resistance
- Highly durable
- Elegant design

## Application

- ▶ Commercial buildings
- ▶ Home uses
- ▶ Indoor/outdoor areas

## Product Specification

<b>Pile Material</b>	PP
<b>Backing</b>	PVC
<b>Weight</b>	3.1 ± 0.2 kg/m <sup>2</sup>
<b>Thickness</b>	7.0 ± 1.0 mm
<b>Mats (cm)</b>	45x60; 60x90
<b>Rolls (cm)</b>	90x1800; 120x1800







# STARRY MAT



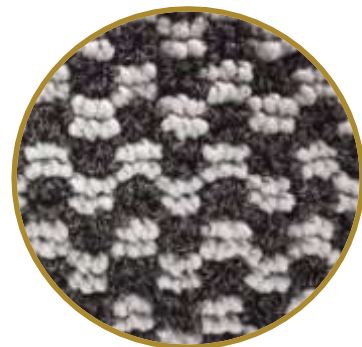
## Main Benefits

- Customizable for matching different design needs
- Soft underfoot and elegant
- Designed for entrance
- Perfect for branding



## Product Specification

<b>Pile Material</b>	PP + Nylon
<b>Backing</b>	PVC
<b>Weight</b>	3.75 ± 0.4 kg/m <sup>2</sup>
<b>Thickness</b>	7.0 ± 1.5 mm
<b>Rolls (cm)</b>	90x1200; 90x1800; 120x1200; 120x1800; 180x1800





**Application**

- ▶ Commercial buildings
- ▶ Home uses
- ▶ Indoor/outdoor areas



# TOTEM MAT



## Application

- ▶ Commercial buildings
- ▶ Home uses
- ▶ Indoor/outdoor areas

## Product Specification

<b>Pile Material</b>	PP + Nylon
<b>Backing</b>	PVC
<b>Weight</b>	3.5 ± 0.4 kg/m <sup>2</sup>
<b>Thickness</b>	7.0 ± 1.5 mm
<b>Mats (cm)</b>	45x60; 45x75; 60x90; 90x120; 90x150; 120x180
<b>Rolls (cm)</b>	90x1200; 90x1800; 120x1800; 180x1800





# PRINTED MAT



## Main Benefits

- Suitable for branding and logos
- Customizable pattern
- Keeps your floor clean

## Product Specification

**Pile Material** Nylon or Nonwoven Fabric

**Backing** Rubber or PVC

**Weight**  $2.43 \pm 1.2 \text{ kg/m}^2$

**Thickness**  $8.5 \pm 0.5 \text{ mm}$

**Mats (cm)** Available in any size (max width: 180, length: no limit)





**Application**

- ▶ Commercial buildings
- ▶ Home uses
- ▶ Indoor/outdoor areas



# TWIN COLOR MAT



## Main Benefits

- Effective dirt and moisture removal
- Easy to clean
- Machine washable
- Slip resistance

## Application

- ▶ Commercial buildings
- ▶ Home uses
- ▶ Indoor/outdoor areas

## Product Specification

<b>Pile Material</b>	Nylon
<b>Backing</b>	Rubber
<b>Weight</b>	2.55 ± 1.25 kg/m <sup>2</sup>
<b>Thickness</b>	10.5 ± 0.5 mm
<b>Mats (cm)</b>	60x90; 75x90; 90x150; 120x180
<b>Rolls (cm)</b>	120x1200; 180x1200

Red

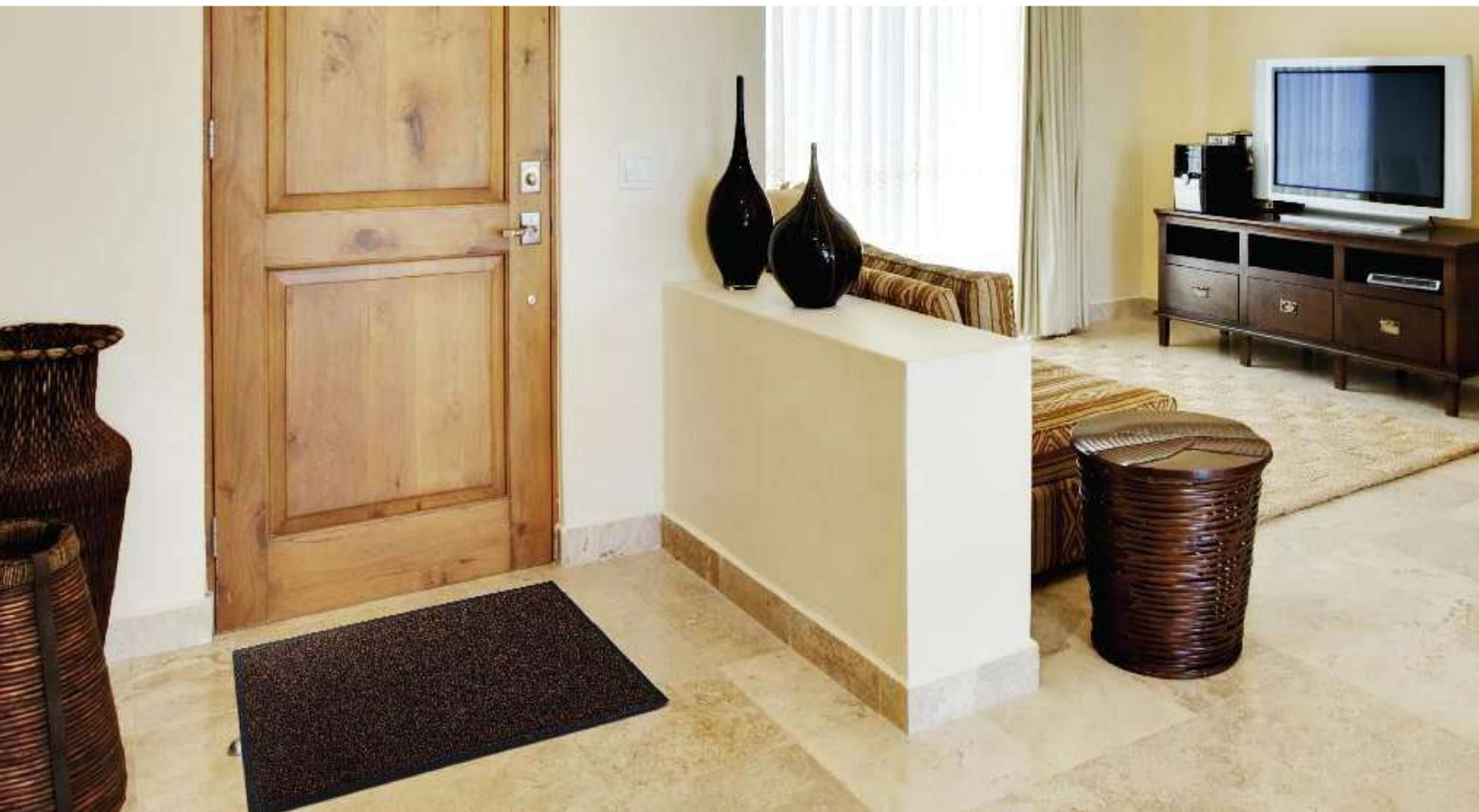


Brown



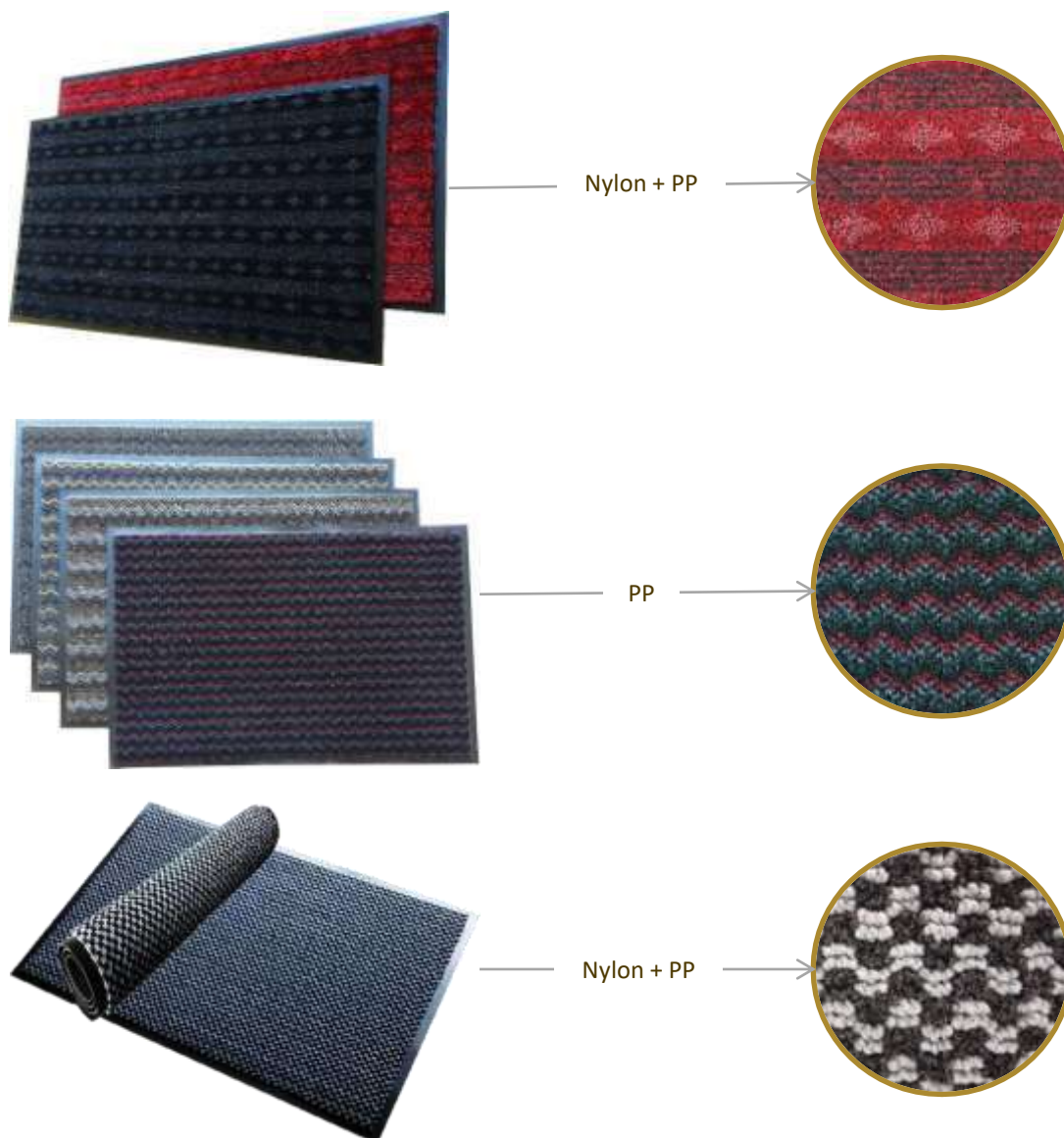
Grey







# MONOFILAMENT YARN



## Main Benefits

- ▶ Excellent fading resistance
- ▶ Perfect moisture resistance
- ▶ Outstanding scraping features

## Product Specification

Material	Polypropylene (PP)
Type	Coarse yarns
Number of Monofilaments	10 ± 2
Monofilament Diameter (mm)	0.20 ± 0.02
Denier per Filament	300 ± 30
Monofilament Breaking Strength (kgf)	≥ 1.2
Monofilament Elongation (%)	23.5 ± 5.0
Tenacity (gf/D)	5.0 ± 1.5

Material	Nylon 6
Type	Coarse yarns
Denier	3500 ± 500
Diameter (mm)	0.20 ± 0.02
Strength (kgf)	≥ 1.4
Elongation (%)	30 ± 10
Tenacity (gf/D)	4.25 ± 0.75

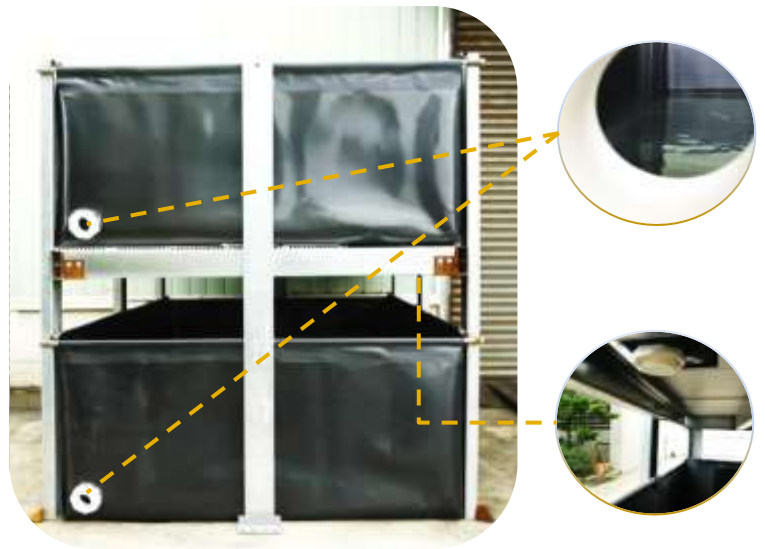
# Waterproofing Membrane

Our **Waterproof Membranes** can be applicable in roofing, building structures and hydraulic constructions. It is a sophisticated and reliable solution to protect construction and extend its lifespan.



## Main Benefits

- Light and wear resistant;
- Excellent weatherability;
- Perfect seam performance;
- Outstanding dimensional stability;
- Excellent elongation and tear strength;
- Environmentally friendly material.



## Application

- Roofing
  - Commercial Constructions;
  - Industrial Constructions.
- Construction Work;
- Hydraulic Constructions:
  - Pisciculture;
  - Artificial Ponds.

## Product Specification

<b>Material</b>	TPO / PVC
<b>Thickness</b>	1 ~ 2.5MM
<b>Width</b>	1.45M
<b>Colors</b>	Grey ; Black ; Blue





